



Grove Park, SE5 | £2,000,000

02087028222

eastdulwich@pedderproperty.com

pedder
We live local



In General

- Five double bedrooms
- Three bathrooms
- Semi-detached, family home
- Off-street parking
- Large, 82 foot garden
- Good condition throughout
- Potential to kitchen-extend (STPP)
- Desirable, residential road

In Detail

CHAIN COMPLETE - Charming, spacious and characterful large family home on this desirable, tree-lined street enviably-located in the Camberwell Grove Conservation area.

This semi-detached beauty boasts over 2,200 Sq Ft of internal space which has been lovingly modernised and maintained by the current owners who are relocating out of London. There is a characterful 16-ft bay-fronted reception room with a feature fireplace and high ceilings as well as a second formal reception room. The 24-ft kitchen-breakfast room offers potential to modernise and extend into the side-return (STPP) and opens out through patio doors onto a splendid 82-ft garden laid-to-lawn with mature shrubs.

Upstairs are five comfortable bedrooms - including the 18-ft principal bedroom which enjoys a fabulous en-suite shower room and bespoke walk-in wardrobe. There are two further bathrooms and the 15-ft back bedroom enjoys a gorgeous stand-on balcony with a view over the gardens and mature trees.

Rosslyn, Grove Park is enviably located for the excellent transport links into The City and West End from Peckham Rye station (0.6 miles) and Denmark Hill station (0.5 miles) as well as the bus/cycle routes through the neighbouring East Dulwich, Herne Hill and Dulwich Village. There are a host of independent shops, bars, restaurants and coffee shops nearby on Bellenden Road and Lordship Lane as well as a choice of parks and green spaces - including the delightful Lettsom Community Garden

There are a host of excellent local primary, secondary and private schools nearby.

The property further benefits from a 16 x12 ft basement with plumbed utility and access to off-street parking.

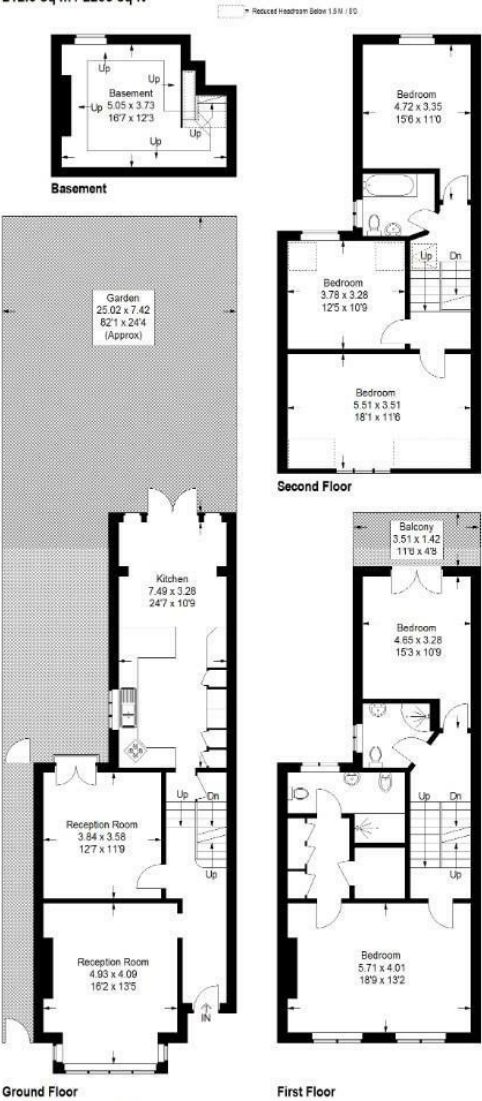
EPC: D | Council Tax Band: F



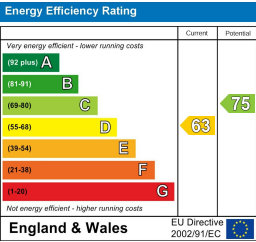
Floorplan

Grove Park, SE5

Approximate Gross Internal Area
212.3 sq m / 2285 sq ft



Copyright www.pedderproperty.com © 2025
These plans are for representation purposes only as defined by RICS - Code of Measuring Practice.
Not drawn to Scale. Windows and door openings are approximate. Please check all dimensions, shapes and compass bearings before making any decisions reliant upon them.



Pedder Property Ltd trading as Pedder for themselves and for the vendor/landlord of this property whose agents they are, give notice that (1) these particulars do not constitute any part of an offer or contract, (2) all statements contained within these particulars are made without responsibility on the part of Pedder or the vendor/landlord, (3) whilst made in good faith, none of the statements contained within these particulars are to be relied upon as a statement of representation or fact, (4) any intending purchaser/tenant must satisfy him/herself by inspection or otherwise as to the correctness of each of the statements contained within these particulars, (5) the vendor/landlord does not make or give either Pedder or any person in their employment any authority to make or give representation or warranty whatsoever in relation to this property.